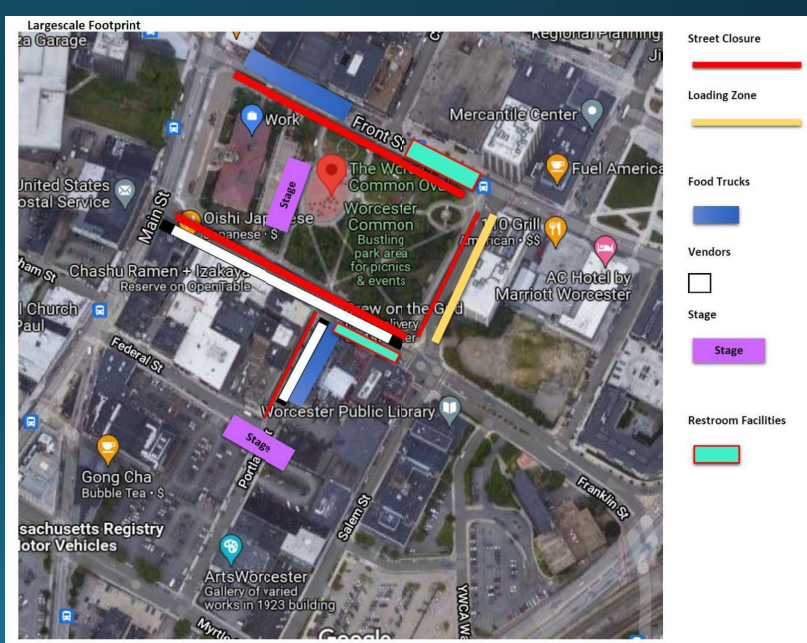
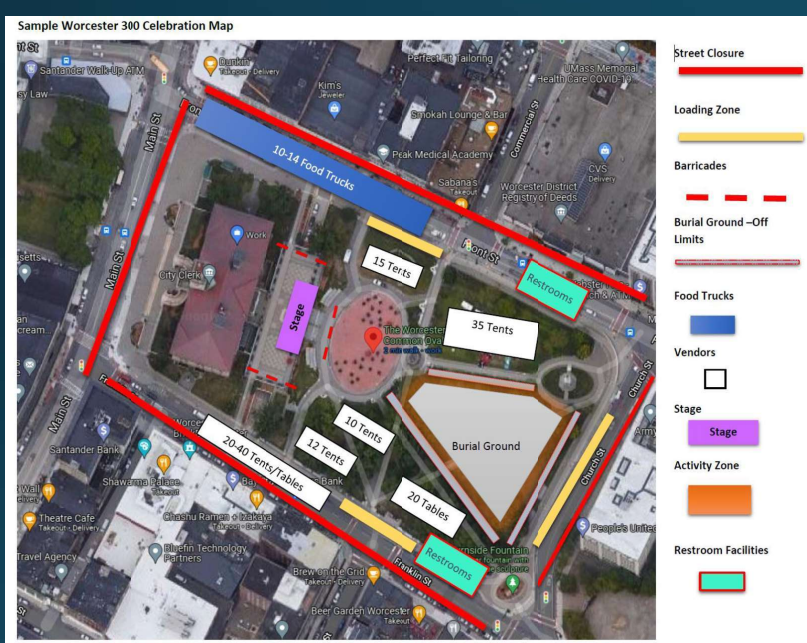


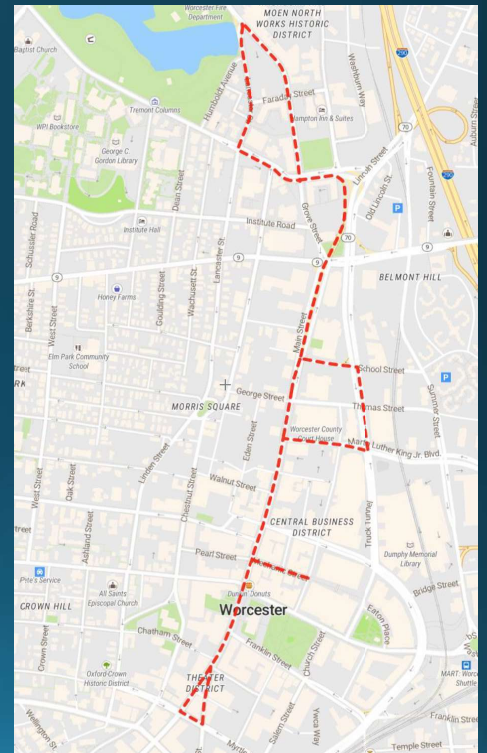
Saturday: Festival Layout



Saturday: Road Race Route

Road Race Route

Start Line @ Mechanic St. & Commercial. Head West on
Mechanic
Right on Main St.
Right on Martin Luther King Blvd.
Left on Major Taylor Blvd.
Left on School St.
Bear right on Main St. & merge into the tunnel
Exit the tunnel and bear left to merge onto Salisbury St.
Right onto Grove St.
Left onto Lancaster St. (mimic the flow of traffic)
Left onto Salisbury St.
Right to merge into tunnel
Exit tunnel on Main St and continue straight
Left on Myrtle
Left on Southbridge to circle back
Right on Main St.
Right on Mechanic St.
Finish line @ Mechanic & Commercial



Created Using: scribblemaps.com

Saturday: Parade Route

Parade Route

Parking off of Prescott Street behind Northworks Complex.

Staging will occur on Prescott and Faraday Street.

Start @ Grove & Faraday

South on Grove St.

Left on Salisbury

Right into tunnel

Merge onto Main St.

End at City Hall

Parade participants continue down Main and can pull into the RMV parking lot.

Shuttle busses are being located to transport Parade participants between the RMV and Northworks back parking lot via side streets.

